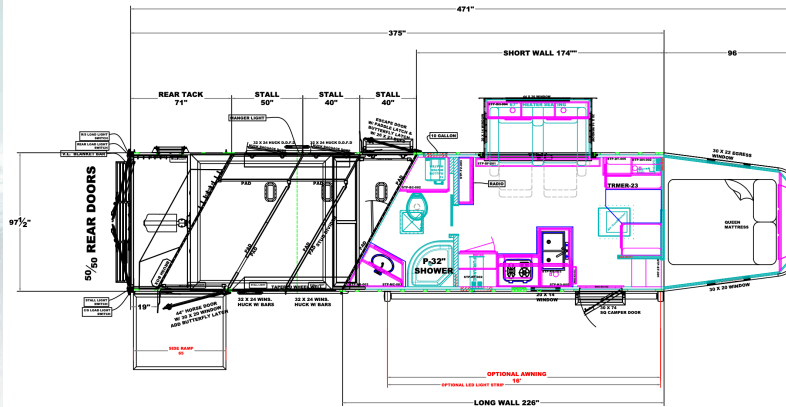


# 2026 STAMPEDE 8314-B RWS

## EXTERIOR STANDARD FEATURES

- Aluminum sidewall posts, top rail, rear hoop, bottom rail.
- 40" Stall setting (Measured center of hinge pins).
- 4" Cross members, typically on 14" centers.
- Extruded aluminum floor below LQ and horse area.
- One piece aluminum roof.
- White, .040 exterior aluminum skin.
- Extruded aluminum sides in horse area.
- Horse area walls and ceiling lined with white aluminum.
- Drop down feed windows standard on all head windows.
- Drop down feed windows standard on all escape doors.
- Escape door standard on 3 horse and larger models.
- Paddle latch in escape door. (3 horse and larger models).
- Butterfly style latch on escape door (3 horse and larger).
- Flip-up camper step at escape door (3 horse and larger).
- Lower section of horse area walls lined with ballistic liner.
- Padded chest and butt straps.
- Padded dividers with air flow shoulder sections.
- Single hydraulic jack. (dual leg optional).
- .100 Aluminum kick plate on butt wall behind ballistic liner sheet.
- Rubber mats in horse area and rear tack.
- (4) Aluminum wheels & steel wheel for spare.
- Drive on trailer tire changing assistant.
- Lower stud divider on front divider.
- Walk thru door between LQ and horse area.
- Tapered inside wheel wells (8 wide models only).
- 18" deep Mangers on all 8 wide models. Includes (1) Skin colored manger door for each stall except front stall with escape door.
- One 12V light between adjoining manger doors in mangers.
- 8 Wide models with mangers have ply-felt lining on inside of mangers.
- Drain and drain tube in all units with mangers.
- Lockable aluminum battery box.
- 0° Dexter EZ-Lube torsion axles W/ electric brakes on all wheels.
- (2) interior & (2) exterior horse ties standard per horse stall.
- (1) 12V load light over the rear horse loading door.
- (1) 12V load light over the horse area on the road side.
- (1) 12V load light over the horse area on the curb side.
- (1) Saddle rack and saddle rack location. (in rear tack).
- (1) Saddle Boss per horse stall.
- 4 Tier aluminum blanket bar installed on rear tack door.
- (1) set of 8 heavy duty bridal hooks. (Installed on rear tack sidewall).
- Square corner camper door with screen to the LQ area.
- Flip up camper step standard at camper door.
- Feed bag rings standard in front stall (8 wide models).
- (1) 2 Way roof vent per horse stall.
- Bauer cam bar locks on rear doors & escape door
- Collapsible rear tack with tie-back.
- Ply-Felt on rear road side door & road side wall of rear tack.
- (1) 12V Light in the rear tack. (switched with stall lights).
- (1) Aluminum brush box installed on rear road side door in tack.
- Full height, 60/40 doors at rear of trailer.
- Wrap-around hinges on rear doors with a hold back per door.
- Radius corner window with bar guard on hip side (1) per stall.
- Window with bar guard on rear curb side door.
- Drip rail above rear doors & Rubber bumper under both rear doors.
- Models with 6' slide-out contain (2) end windows, (1) Picture window and a slide-out awning.
- Models with 9' slide-out contain (1) end window, (1) Picture windows and a slide-out awning.
- 12V Exterior patio light and under goose-neck light.
- LED clearance lights (including upper and lower)
- (2) Sets of LED stop/tail lights.
- 7 Way bargeman cord for trailer lights.
- Aluminum hook to hold trailer light cord to road side gusset area.
- Break-away emergency brakes switch.
- Coupler designed for 2 5/16" ball and safety chains.



**This Unit is 8' Wide, 7'8\"/>**

## TRAILER FEATURES ADDED

- Hoof Grip Flooring
- White Side Sheets
- Stainless Steel Nose Wrap
- 16", 8 Lug Black Aluminum Wheels
- High Intensity LED Lights In Horse Area and Rear Tack
- 8' Hay Pod With Walkway & Pull Out Ladder (walkway between the hayed and rear of the trailer with an elevated generator platform)
- Dual Leg Hydraulic Jack (with dual control switch)
- Full Rear Tack & Rear Door (lined with ply-felt)
- Side Load Door Outside Of Load Door With Rubber On Curbside
- Side Load Ramp
- Aluminum Shelf In Rear Tack
- A Set Of 13 Heavy Duty Bridle Hooks In The Rear Tack
- Telescoping Rear Divider
- Large Step At Rear Of Trailer
- Structural Reinforcement Added To The Road Side Bottom Rail

**GVWR - 14,000 LB**  
**AXLE - (2) 7,000 LB**  
**BELLY LENGTH - 31'3"**  
**EMPTY WEIGHT - APPROX. 12,530 LB**

**WARRANTY**  
**2-YEAR ON LIVING QUARTERS**  
**8-YEAR STRUCTURAL**

## INTERIOR STANDARD FEATURES

- Solid wood cabinet faces.
- Solid wood flat panel cabinet doors with Euro style hinges.
- Crown molding in the main LQ, Kitchen and front bunk.
- Exterior Standard Features.
- Picture frame style window rings.
- Decorative panel ceiling with matching batten trim.
- Soft-touch walls with lower wainscot in main LQ & Bathroom.
- Soft-touch walls with lower wainscot & walk-thru door.
- Fabric wrapped valance with solid wood ends.
- Pleated, night only shades on all windows.
- Kitchen back-splash to be laminate to match the counter-tops.
- Overhead cabinet above the seating area (based on floor plan).
- Carpeted front bunk floor and step tops.
- Linoleum front bunk floor and step tops.
- Flat panel insert for refrigerator front.
- All side-out models standard with flush floor slide.
- (1) 120V exterior outlet near the camper door.
- TV Prep locations per floor plan (with 120V & coax for TV antenna).
- 12V lighted grab handle beside camper door.
- Powered awning with LED light strip (size varies by model).
- 3 Way switching for stall lights (bathroom & rear hoop).
- Drawers in the kitchen (when possible).
- Single seating models standard with a sofa only and dual seating models standard with one sofa and one dinette.
- 120 Volt outlet and the head of the bunk on road & curb sides.
- Sconce lights at the head side of the bed.
- 12 Volt LED ceiling lights in the bunk, main LQ & bathroom.
- 12V light on bottom side of the overhead cabinet & seating area.
- 12 V light on bottom side of the kitchen overhead cabinet.
- White shower pan and wall liner with opaque shower door.
- Foot flush RV toilet.
- Sky-dome above the shower.
- Towel bar and toilet paper holder in bathroom.
- Stainless steel sinks for the bathroom and kitchen.
- High velocity vent fan with rain sensor in the bathroom.
- Satellite inlet connection for use with portable satellite.
- AM/FM/CD/DVD radio with inside and outside speakers.
- TV antenna with booster.
- 32" Smart TV (except 8\_12.5B and 7 wide models get 24" Smart TV).
- 120V outlet near kitchen and bathroom vanities.
- 3 Way switch for bunk lights.
- 12V USB charger near kitchen area.
- RV Queen mattress in the front bunk.
- Built in microwave.
- 3 Cube or 6 Cube refrigerator (based on floor plan).
- 2 Burner, recessed cook-top with glass top.
- 19,000 BTU, LP furnace.
- 13,000 or 15,000 BTU air conditioner (based on floor plan).
- Ducted air conditioning on all units.
- 6 Gallon direct spark ignition water heater. Dual 12V deep cycle batteries with battery cut-off switch.
- Dual 20# LP tanks with regulator and switch over valve.
- Under belly fresh water tank (38 gallons).
- Gray water waste tank (35 gallons).
- Black water waste tank (35 gallons).
- Smoke/CO/LP detectors & fire extinguisher.
- Outside water spigot.
- Sewer hose & holder under the front bunk.
- Low point drains for hot and cold water lines.
- Water heater by-pass valve.
- 12 Volt water pump with on demands system.
- 30 Amp, 120 volt power distribution centre.
- Removable shoreline cord.
- 120V to 12V power converter.
- 3rd Party certification (TR Arnold).

## INTERIOR FEATURES ADDED

- Porcelain Toilet Upgrade
- Generator Pre-Wire
- Convection Microwave
- Theatre Seating
- Electric Fireplace
- 10 Gallon Water Heater Upgrade
- Black Tank Rinse Assist
- Cabinet colour - Arctic Teak
- Flip-Up Counter Top Extension
- Added 200 Watt Solar Panel System

**MSRP - \$201,498**

**\$155,999**

**YOUR PAYMENT**

MONTHLY	BI-WEEKLY
<b>\$1,374</b>	<b>\$634</b>
TERM/AM	INTEREST RATE
240/240	7.99%

OAC, finance fee of \$599 included in payment, cost of credit during term: \$165,453.68 (APR 8.71%)