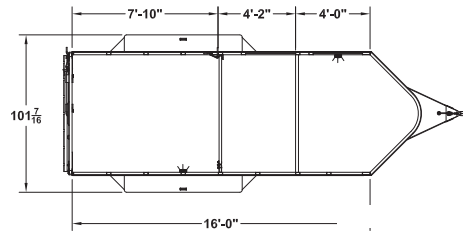
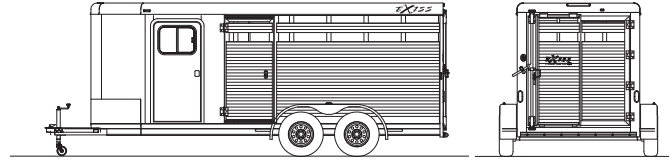




2023 Exiss Express STC 616 BP 7'2" Tall

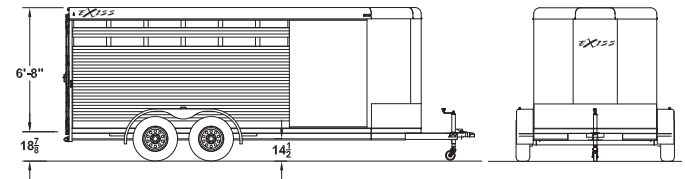
CONSTRUCTION FEATURES

- 6'8" outside width
- Available with 6'8" or 7'2" inside height
- Available in 16' length
- All aluminum construction w/ single piece aluminum roof
- Interlocking extruded aluminum non-skid plank floor
- 2" x 4" I-beams on 12" centers
- (2) 5,200 lb. rubber torsion axles w/ electric brakes
- (5) 15" 6 hole steel wheels w/ 8 ply import tires
- Aluminum V-hitch w/ 2 5/16" coupler
- Breakaway switch w/ battery and slip hook safety chains
- 2,000 lbs. top wind jack w/ wheel
- .040 white aluminum sheets on nose, sides
- Extruded aluminum slat outside of livestock area
- Spare tire w/ interior mount
- 3/8 transferable warranty



EXPRESS STC 616 BP
FLOORPLAN
(6'8" Tall Shown)

7'2" Tall



STOCK AREA FEATURES

- Two air gaps w/ Plexiglas tracks in stock area
- Heavy-duty 32" streetside unload door (w/air gaps)
- Full swing center gate w/ hold back
- Heavy-duty slam latch w/ external release
- Full swing rear gate (w/ air gaps)
- Easy-glide slider w/ handle on rear door (w/ air gaps)
- One LED dome light in stock area w/ switch on rear frame
- Full width, rear rubber bumper

7'2"

ADDITIONAL FEATURES ADDED

- **Halter Hook Bar (Set of 6)**
- **Aluminum Brush Tray**
- **Fold Down Blanket Bar**
- **Exterior Tie Rings x4**
- **Metallic Black Side Sheets**
- **Rubber Mat Flooring**
- **Removable/adjustable 3 Tier Saddle Rack 7' Tall**

TACK AREA FEATURES

- 4' straightwall tack room
- Camper door w/ sliding window, dead bolt and screen door
- One interior LED lights in tack area w/ wall switch

CUSTOMER CARE

8 years Structural & Transferable Warranty
3 years on Components



MSRP: \$34,275
SALE PRICE: \$30,999

YOUR PAYMENT	
MONTHLY	BI-WEEKLY
\$374	\$172
TERM/AM	INTEREST RATE
60/180	10.99%
	APR 12.13%

OAC, finance fee of \$399 included in payment, cost of credit during term: \$10,031.89

MODEL	SIZE	GVWR	EMPTY	AXLE
EXPRESS STC 616 BP - 7'2" Tall	6'8" x 16'	9,995	TBD	(2) 5,200