



# 2024 EXISS CUSTOM HORSE - EXISS 7200 SR (2+1)

## CONSTRUCTION FEATURES

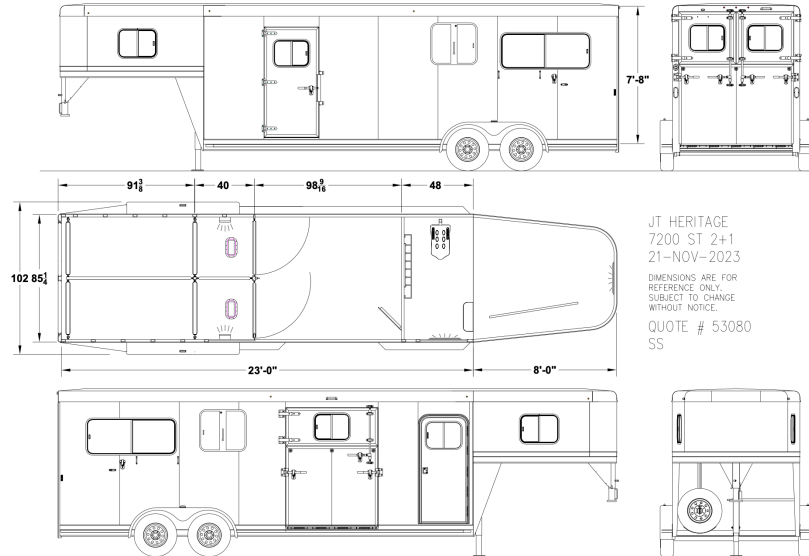
- 7'8" inside height – 7'0" outside width
- All aluminum construction w/ single piece aluminum roof
- Extruded plank flooring w/ 2" x 4" I-beams on 16" centers
- (2) 5,200 lb. rubber torsion axles w/ electric brakes
- Kingpin hitch w/ 2 5/16" adjustable coupler
- Breakaway switch w/ battery and slip hook safety chains
- Five 16" 6 hole aluminum wheels w/ 10 ply import tires
- Spare tire w/ exterior mount
- Single leg landing gear w/ removable crank handle
- .040 white aluminum side sheets
- Full length running boards w/ tear-drop fenders
- LED brake and running lights
- LED load light at rear of trailer
- Solid wall separating dressing room from horse area
- Two outside tie rings per horse
- 3/8 transferable warranty

## HORSE AREA FEATURES

- Horse area walls insulated and lined w/ white aluminum
- Rubber installed 48" high w/ white aluminum lining above
- Aluminum kickplate behind rubber lining
- Two inside tie rings per horse
- Lifetime rubber floor mat in horse area
- One streetside 24" x 57" window w/ bars and screen
- One curbside 24" x 57" window w/ bars and screen
- One padded 7' divider w/ body and shoulder separator
- Hardware allows for (optional) removable head divider
- Two access doors w/ 18" x 24" window w/ screen and bars
- One pop-up two-way aluminum roof vent per stall
- Spring-loaded rear ramp w/ two top doors above
- Cam locks and locking keyed hasps on rear doors
- 19" x 26" window in two top rear doors
- Two interior LED lights in horse area
- One padded aluminum butt bar and breast bar per stall

## DRESSING ROOM FEATURES

- 4'6" straightwall dressing room
- One 19" x 26" window w/ screen on each side of gooseneck
- Carpeted dressing room floor, drop, and gooseneck bed
- Two interior LED lights in dressing area
- Camper door w/ sliding window, dead bolt and screen door
- Adjustable saddle rack on removable post (one per horse)
- Blanket bar, brush tray, clothes rod and six halter hooks



## OPTIONAL EQUIPMENT

- 8' Long Front Stall
- Opti-Brite LED Interior Strip Light 16 Long x2 in dressing room
- Stainless Front Nose Sheet
- Champagne Side Sheets
- Air Flow Head Divider w/ Bars
- Easy Care Flooring ILO Rubber Mats in Horse Area
- Straight Load Aluminum Lower Divider Panel

MSRP: \$77,485

**SALE PRICE: \$65,999**

YOUR PAYMENT	
MONTHLY	BI-WEEKLY
<b>\$766</b>	<b>\$353</b>
OAC	OAC
TERM/AM	INTEREST RATE
180/180	10.39%
	APR 11.38%

OAC, finance fee of \$399 included in payment, cost of credit during term: \$68,151.44

**WARRANTY**  
**8 year structural**  
**3 years on components**

MODEL	SIZE	STALLS	GVWR	EMPTY WEIGHT	AXLES
7200 SR (2+1)	7'0" X 22'0"	2H or 3H	12,000	4,700	(2) 6,000